

# The Board of Directors and the Executive Director : A Partnership Model

Alberto R. Cortés, MBA  
Executive Director  
Mama's Kitchen

University of San Diego's  
11<sup>th</sup> Annual Nonprofit Governance Symposium  
January 9-10, 2015

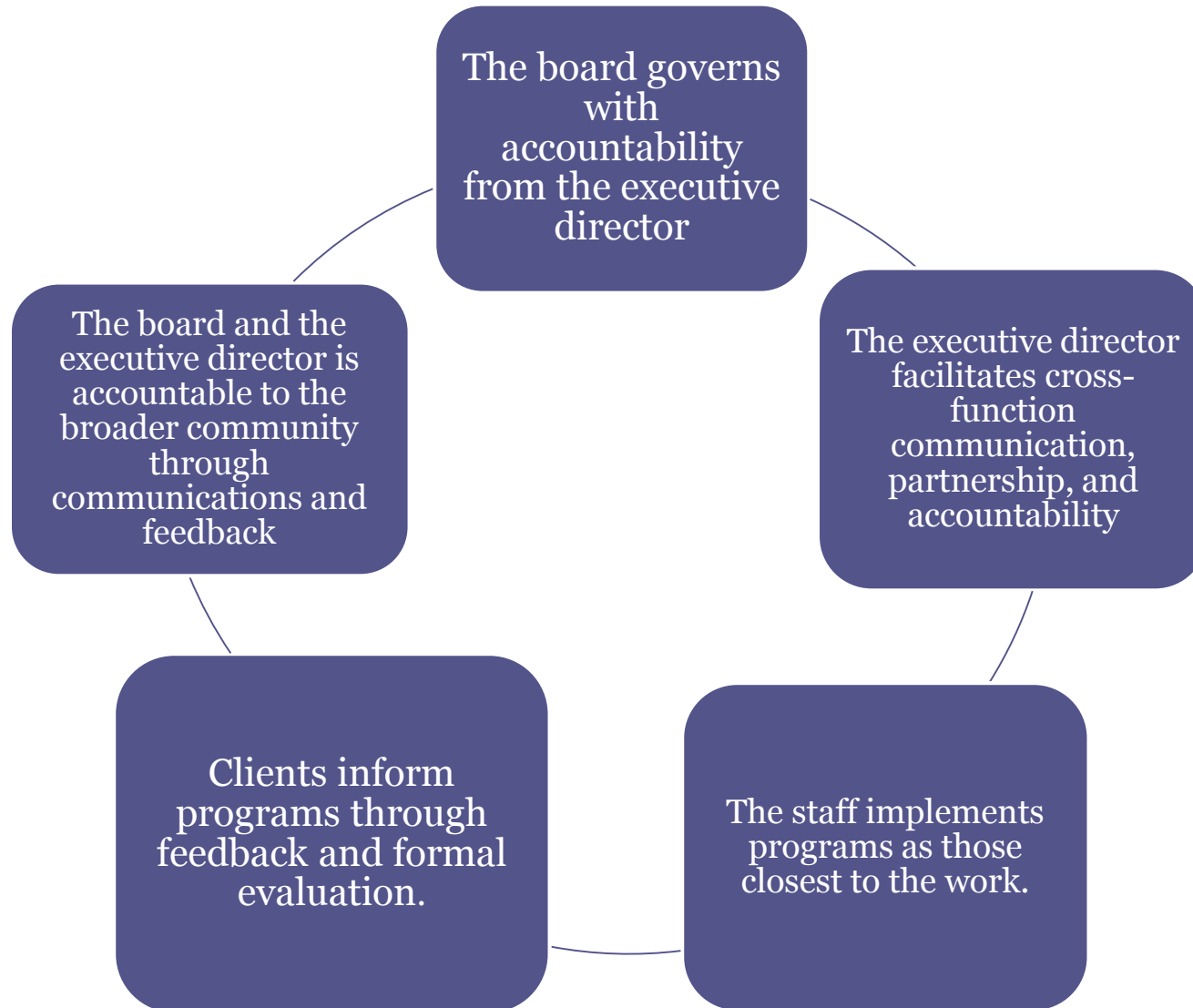
# Roads to explore:

- Clear Sense of Roles and Responsibilities
- Cultivating Relationships
- Partnership between board chair and executive director
- Communication, communication, communication!

# Traditional Hierarchical Model (formal)



# Partnership Model (Informal/Actual)



# Clear Sense of Roles

<b>Area of Responsibility</b>	<b>Board's Role</b>	<b>Executive Director's Role</b>	<b>Joint Roles</b>
Mission & Planning			
Programs			
Fundraising			
Personnel			
Marketing			
Finance			

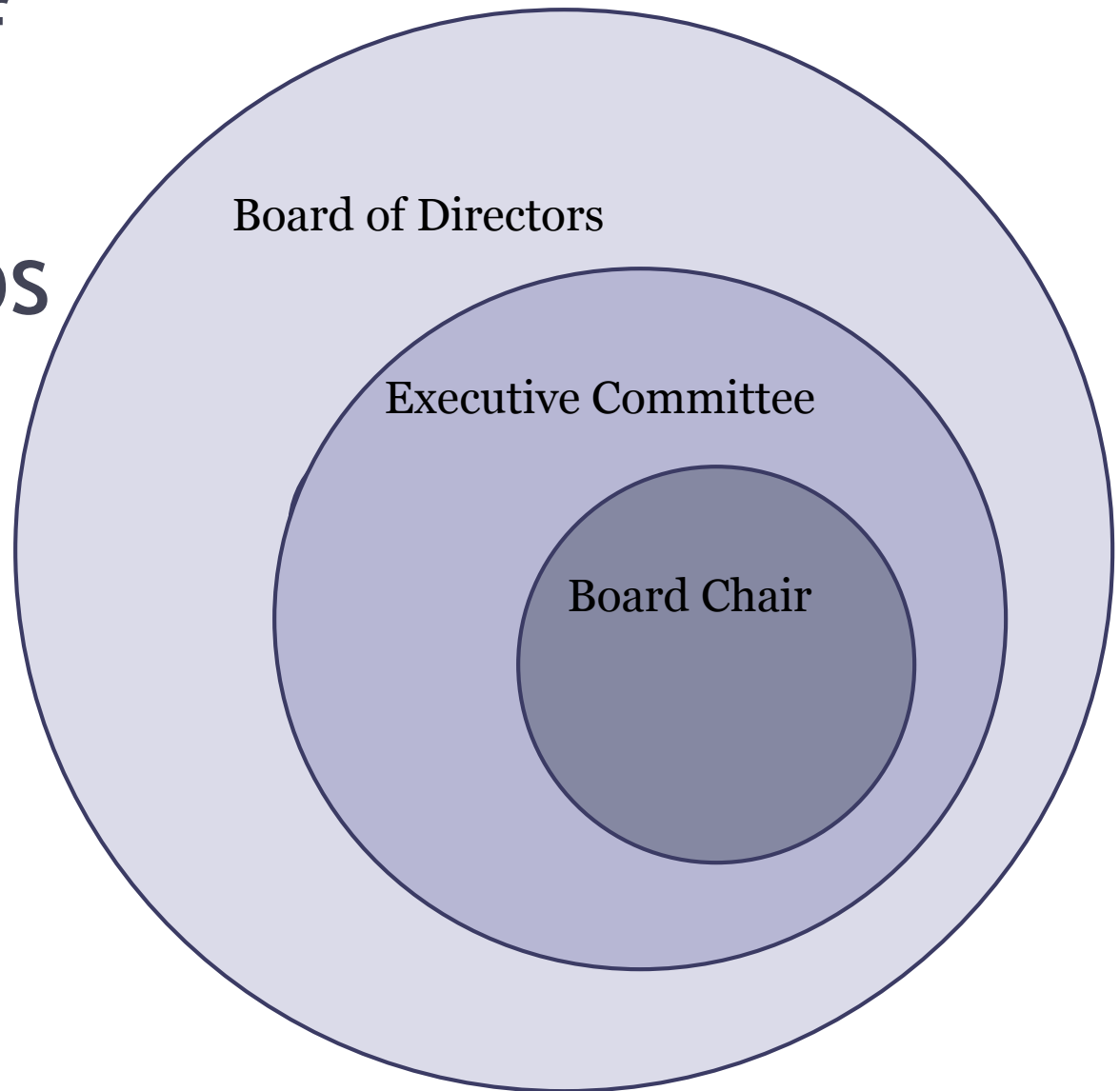
# Clear Sense of Roles

<b>Area of Responsibility</b>	<b>Chair's Role</b>	<b>Executive Committee's Role</b>	<b>Board's Role (Committees' Role)</b>
Board Agenda			
Executive Director Hiring, Evaluation			
Setting Policy			
Fundraising			

# Cultivating Relationships

- Trust Building
- Respect
- Ability to disagree
- Willingness to learn
- Willingness to go to places of discomfort

# Relativity of Board Relationships





# The board chair and the executive director

Dancing to the  
rhythm of the  
music.



# Trust Building



Calculus-  
based

Knowledge-  
based

Identification-  
based

From: *“The Board Chair-  
Executive Director  
Relationship: Dynamics  
that Create Value for  
Nonprofit Organizations”*

# Communication, communication, communication!

- Within Context:
- Reports
- Calendars
- Meeting agendas
- Follow up
- Outside expertise

# Closing thought

## From *The Irony of American History*

*Nothing that is worth doing can be achieved in our lifetime;  
Therefore we must be saved by hope.*

*Nothing which is true or beautiful or good makes complete sense  
In any immediate context of history;  
Therefore, we must be saved by faith.*

*Nothing we do, however virtuous, can be accomplished alone;  
Therefore we are saved by love.*

*- Reinhold Niebuhr*