

# San Diego, 2050 Is Calling.

## HOW WILL WE ANSWER?

### FACING THE FUTURE:

How Science Can Help Prepare San Diego Regional Leaders for Climate Change

## Design Resources

This project is funded by the National Science Foundation (NSF) under award number DUE-1239797. Any opinions, findings, and conclusions or recommendations expressed in this material are those of the author(s) and do not necessarily reflect the views of the National Science Foundation.



TEMPERATURE & PRECIPITATION



WATER RESOURCES



COASTAL FLOODING



WILDFIRES



NATURE'S BENEFITS



HEALTH

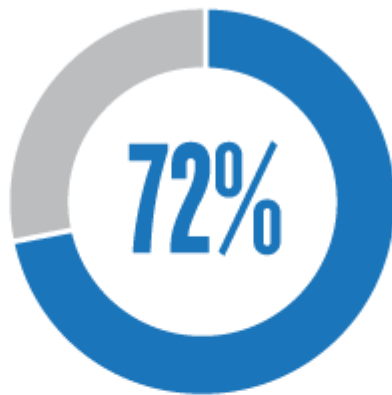
84%

OF SAN DIEGO COUNTY RESIDENTS BELIEVE  
CLIMATE CHANGE IS HAPPENING

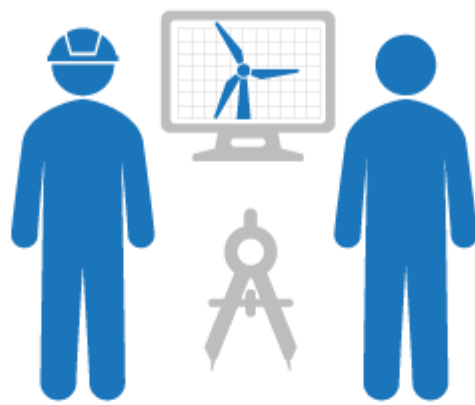




**77%** of San Diego County voters believe that we can have a clean environment and a strong economy at the same time without having to choose one over the other.



**72%** of San Diego County voters believe that the San Diego region should take a leadership position in setting goals for reducing greenhouse gas emissions.



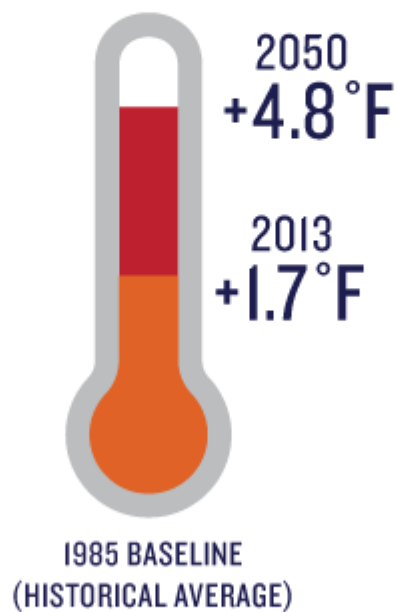
In the San Diego region, there was a **46%** increase in jobs in the clean economy sector from January 2010 to January 2011.



Venture capital investments in clean technology in 2012 in the San Diego region increased **80%** from 2011, totaling \$340 million.



**ANNUAL AVERAGE TEMPERATURE IS INCREASING  
AND WILL CONTINUE TO INCREASE  
BETWEEN NOW AND 2050:**



**WE EXPECT TO SEE CHANGES IN OUR REGION'S  
PRECIPITATION PATTERNS:**



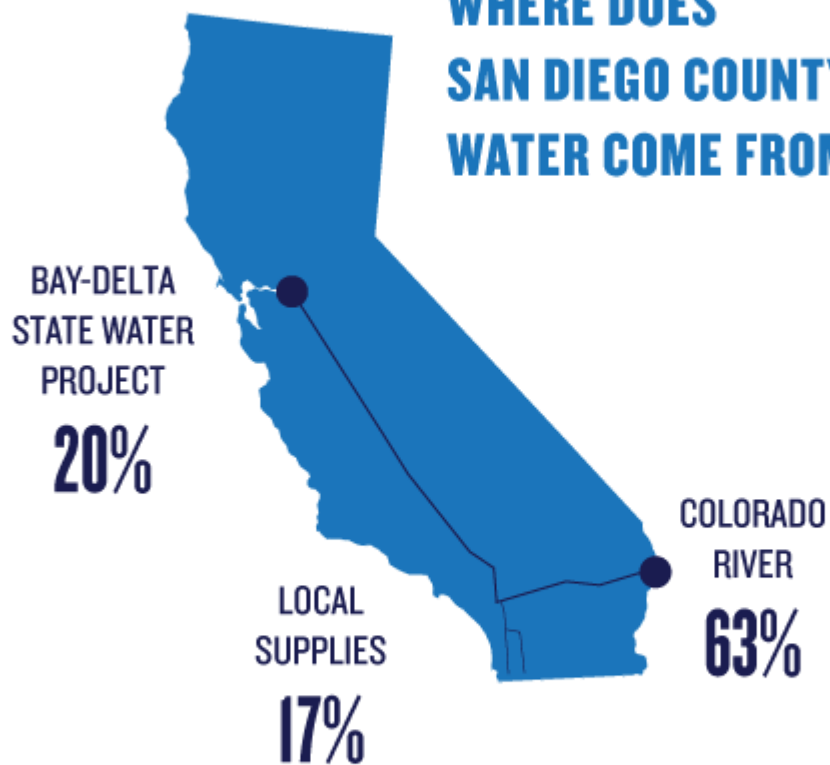
**16% FEWER RAINY DAYS**



**8% MORE RAINFALL DURING  
THE BIGGEST RAINSTORMS**



## WHERE DOES SAN DIEGO COUNTY'S WATER COME FROM?

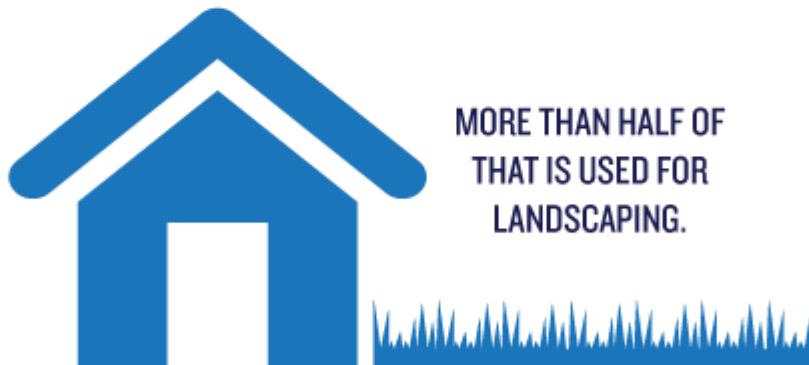




WARMER TEMPERATURES MEAN LESS  
SNOWPACK AND GREATER EVAPORATION.  
SCIENTISTS ARE EXPECTING A 12%  
DECREASE IN THE RUNOFF AND  
STREAMFLOW THAT IS REPLENISHING  
OUR MAJOR WATER SOURCES.

**RESIDENTIAL USE MAKES UP 66% OF TOTAL  
WATER DEMAND IN SAN DIEGO**

**66%**

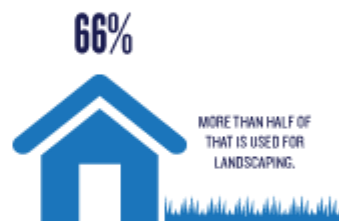


**MORE THAN HALF OF  
THAT IS USED FOR  
LANDSCAPING.**

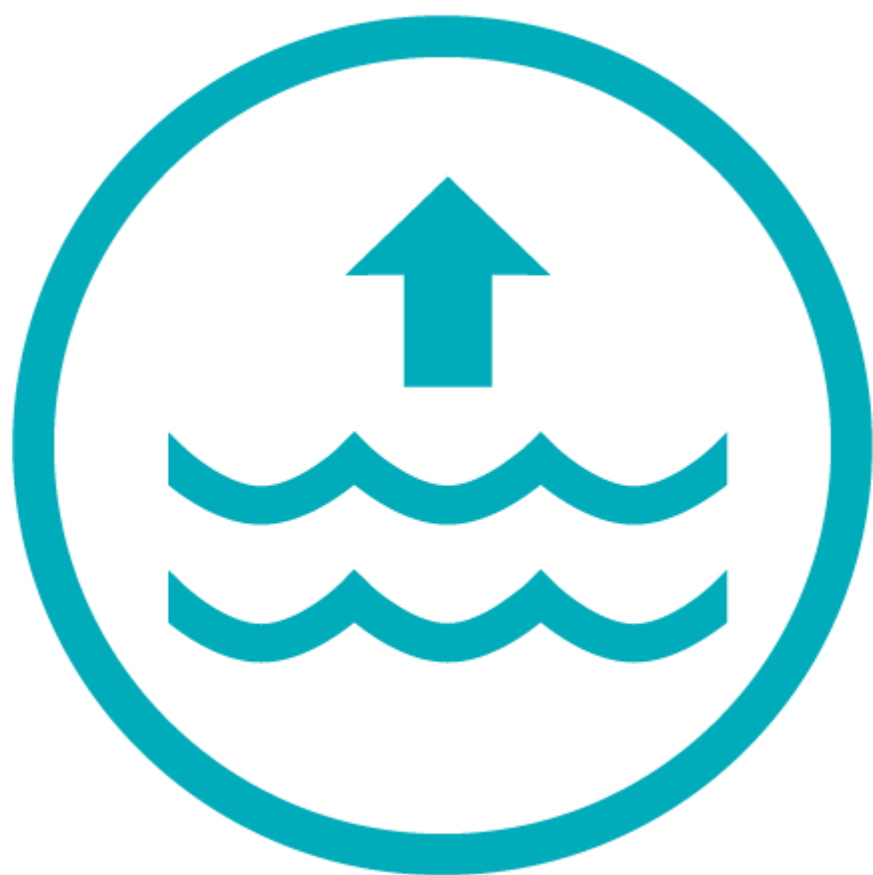


WARMER TEMPERATURES MEAN LESS SNOWPACK AND GREATER EVAPORATION. SCIENTISTS ARE EXPECTING A 12% DECREASE IN THE RUNOFF AND STREAMFLOW THAT IS REPLENISHING OUR MAJOR WATER SOURCES.

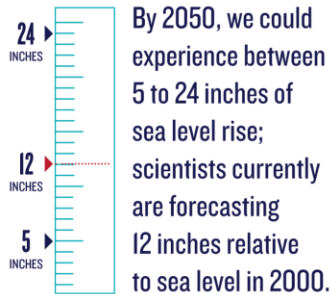
**RESIDENTIAL USE MAKES UP 66% OF TOTAL  
WATER DEMAND IN SAN DIEGO**







## HOW WILL SEA LEVEL RISE AFFECT COASTAL FLOODING?



Sea level rise with tides + storms

Mid-century sea level

With tides + storms

Current sea level



Sea level rise will be compounded by other causes of flooding that we already experience: extreme high tides and storm surges. Coastal flooding will lead to further beach and bluff erosion as well as runoff and drainage problems from intense storms.



**THREE OF CALIFORNIA'S 10 LARGEST WILDFIRES WERE  
IN SAN DIEGO COUNTY AND BURNED 646,661 ACRES**



**1970**

---

LAGUNA FIRE



**2003**

---

CEDAR FIRE



**2007**

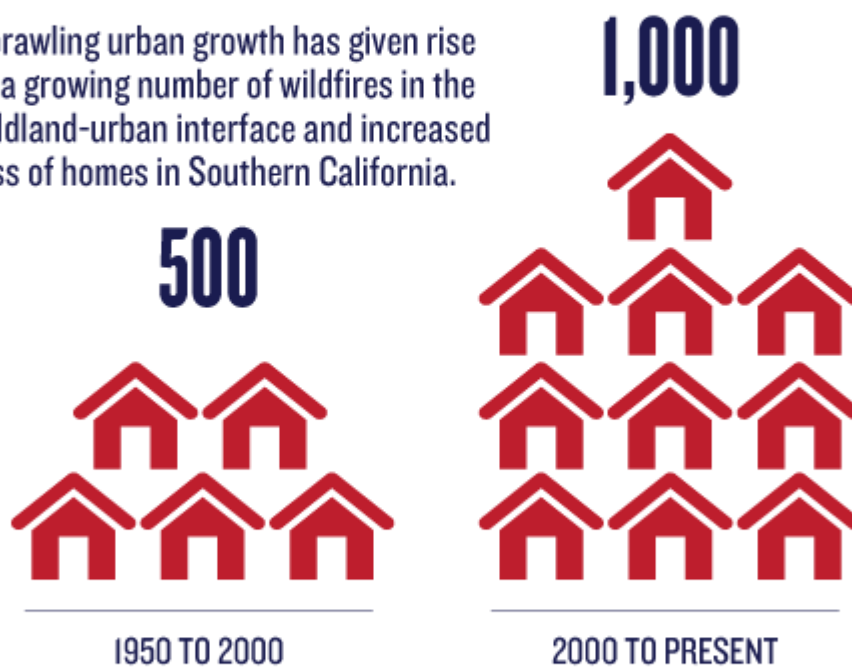
---

WITCH CREEK FIRE

The wildfires of 2003 and 2007 together cost more than  
**\$4.5 BILLION** in damages and incalculable indirect costs in lost  
workdays, business shutdowns and decreased tourism.

## HOMES LOST ANNUALLY TO WILDFIRES IN SOUTHERN CALIFORNIA

Sprawling urban growth has given rise to a growing number of wildfires in the wildland-urban interface and increased loss of homes in Southern California.



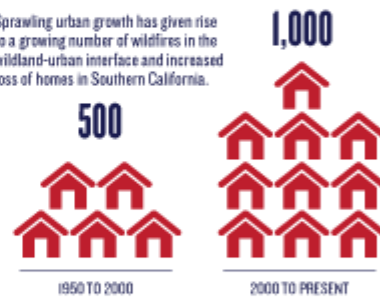
THREE OF CALIFORNIA'S 10 LARGEST WILDFIRES WERE  
IN SAN DIEGO COUNTY AND BURNED 646,661 ACRES



The wildfires of 2003 and 2007 together cost more than **\$4.5 BILLION** in damages and incalculable indirect costs in lost workdays, business shutdowns and decreased tourism.

HOMES LOST ANNUALLY TO WILDFIRES  
IN SOUTHERN CALIFORNIA

Sprawling urban growth has given rise to a growing number of wildfires in the wildland-urban interface and increased loss of homes in Southern California.





## WHAT ARE NATURE'S BENEFITS?

Humans benefit from the many resources and natural processes that are supplied by healthy, functioning ecosystems.



---

WATER  
PURIFICATION



---

TEMPERATURE  
REGULATION &  
AIR FILTRATION



---

FOOD &  
AGRICULTURE

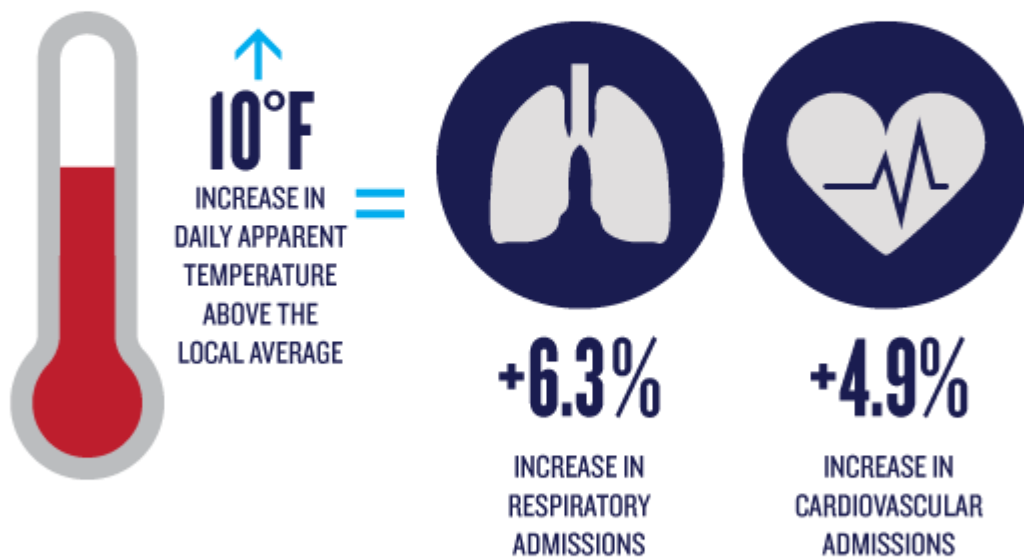


---

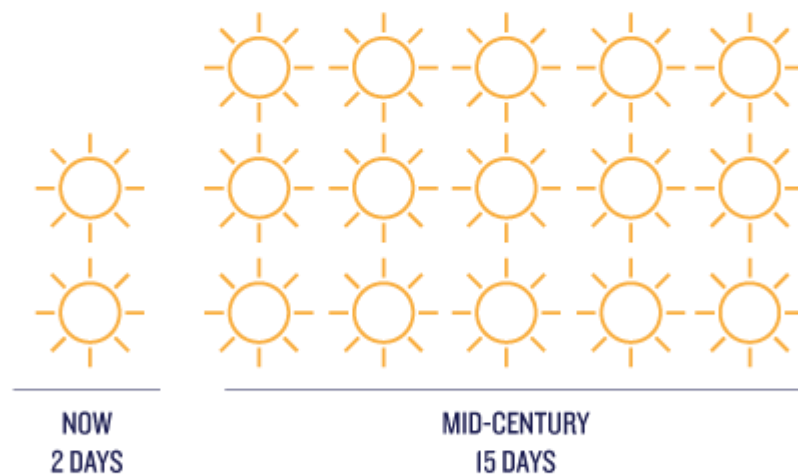
CULTURE &  
RECREATION



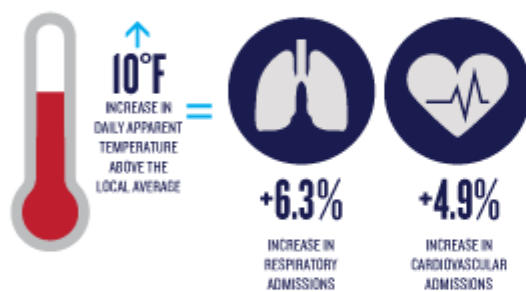
**ONE STUDY MODELED THE HISTORIC IMPACTS OF INCREASING  
TEMPERATURES ON HOSPITALIZATIONS AND FOUND THAT:**



**BY 2050, SCIENTISTS EXPECT THAT WE WILL HAVE  
7 TIMES AS MANY DAYS OF EXTREME HEAT PER YEAR  
THAN THE PRE-2000 HISTORICAL AVERAGE.**



ONE STUDY MODELED THE HISTORIC IMPACTS OF INCREASING TEMPERATURES ON HOSPITALIZATIONS AND FOUND THAT:



BY 2050, SCIENTISTS EXPECT THAT WE WILL HAVE 7 TIMES AS MANY DAYS OF EXTREME HEAT PER YEAR THAN THE PRE-2000 HISTORICAL AVERAGE.

