

# Acceptable Recyclables

Mix Paper



OCC



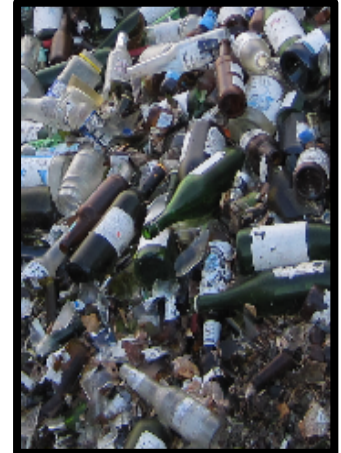
Tin Cans



#3-7 Plastics



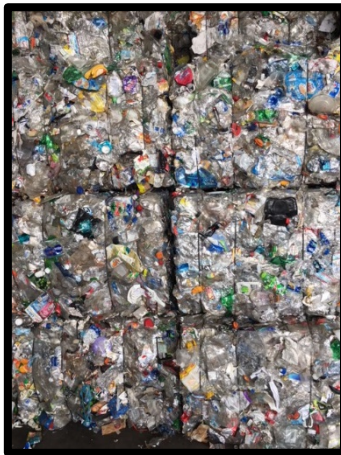
Glass



Rigid Plastics



#1 PET



#2 HDPE - N



#2 HDPE - C



Alum Cans



# Acceptable Materials Examples

Clean and Dry



Colored OCC  
Junk mail  
Office paper  
Newspaper and  
Magazines  
Chipboard (thick  
Paper Packaging)



Brown Cardboard  
Boxes



Clean Food Cans  
Coffee Cans  
Clean Pet Food  
Cans



# Acceptable Materials Examples

Clean and Dry



Clean Food Containers  
yogurt containers  
peanut butter  
Margarine  
ketchup



Empty Tubs and Buckets  
Cat Litter Tub  
Crates  
Storage Containers



Water Bottles  
Plastic Liquor Bottles  
Glass Cleaner and Multi-  
Purpose Spray Bottles  
Hand Sanitizer Container

# Acceptable Materials Examples

Clean and Dry



Milk Jugs  
Laundry Detergent  
Containers  
Shampoo and  
Lotion Containers  
Cleaning Liquid  
Containers



Aluminum Cans



Beer Bottles  
Alcoholic Beverage  
Bottle  
Clean Food Jars

# Not Acceptable Items

## Top 10 Contaminates

LDPE - Film



Tires



Textiles



Food/Trash



Scrap Metal



Tanks



Hoses/ Tubing



Haz Waste



Wood



Yard Waste



# Not Acceptable - LDPE Film

Grocery, Ziploc, film/ stretch wrap, food and trash bags





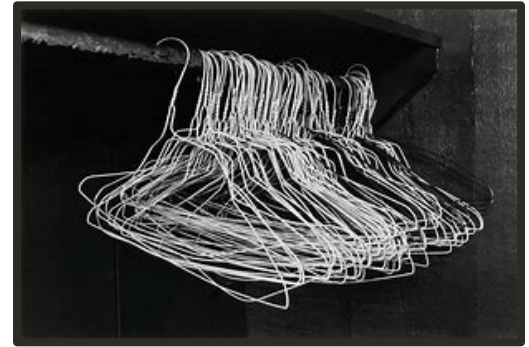
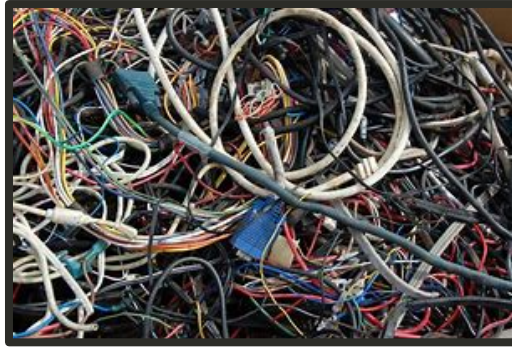
# Not Acceptable - Textiles

Clothing, blankets, pillows, sleeping bags, curtains and rugs



# Not Acceptable - Scrap Metal

Auto parts, pipes, irons, pots/ pans, chains and wire





# Not Acceptable - Hoses/ Tubing

Garden, air, hydraulic, pneumatic and tubing



# Not Acceptable - Wood

Construction, furniture, bats and misc. scrap



# Not Acceptable - Tires

Cars, trucks, bike and dolly





# Not Acceptable - Household Trash

Food waste, pet waste, soiled plates, restroom waste, diapers etc.



# Not Acceptable - Tanks

Propane tanks, torch tanks, helium tanks, fire extinguishers, etc.



# Not Acceptable - Med/ HAZ/Universal Wastes

Syringes, solvents, chemicals, universal and electronic wastes





# Not Acceptable - Greenwaste

Tree/ palm branches, plants, dirt and soil



# Alternative Recycling

Reuse, Donate, Repurpose



Community  
Metal  
Recycling  
or Scrap  
Yard



Donate Old  
Clothing &  
Shoes



Return  
Plastic  
Bags To  
Stores or  
Reuse



Universal,  
E-Waste  
and HAZ  
Waste  
Round-Ups



Find A  
Wood  
Recycler to  
Repurpose

