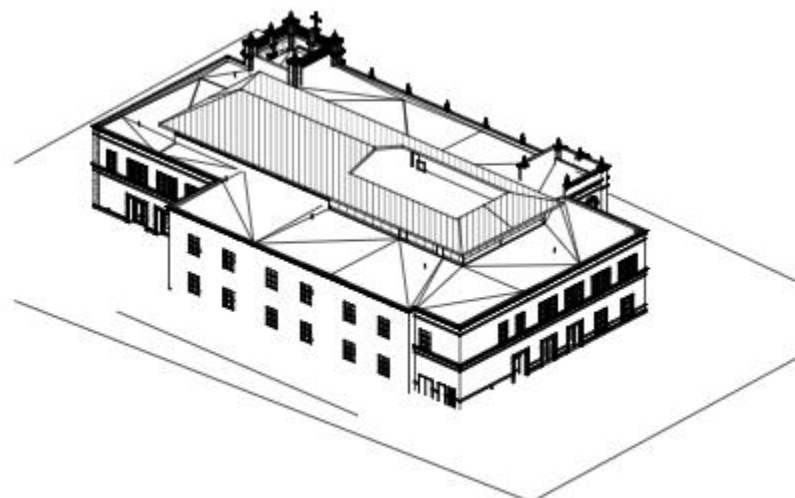


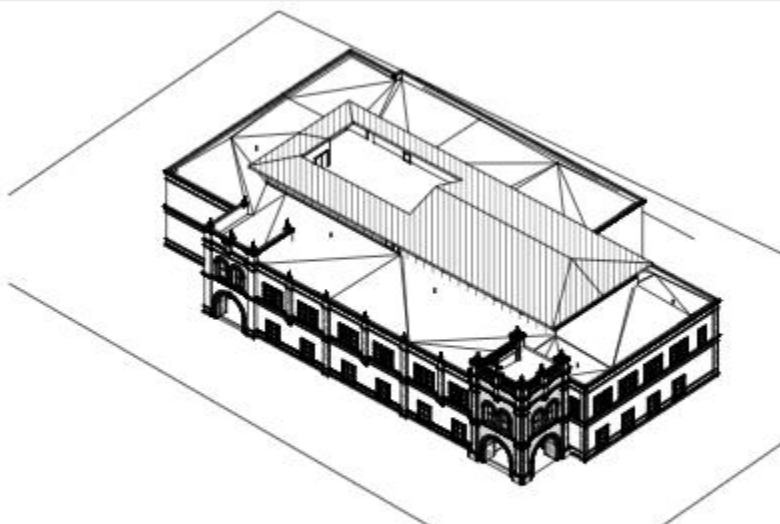
Learning Commons: Faculty Forum

November 6, 2018





2 AXON-NE
REV 01



1 AXON-SW
REV 01



3 3D View 2
REV 01

UNIVERSITY OF
SAN DIEGO
LEARNING COMMONS
2888 LUGGILL BLVD.
SAN DIEGO, CA 92110

Gensler

ARCHITECT
2017.08
ARCHITECT
ARCHITECT

ARCHITECT
2017.08
ARCHITECT
ARCHITECT

ARCHITECT

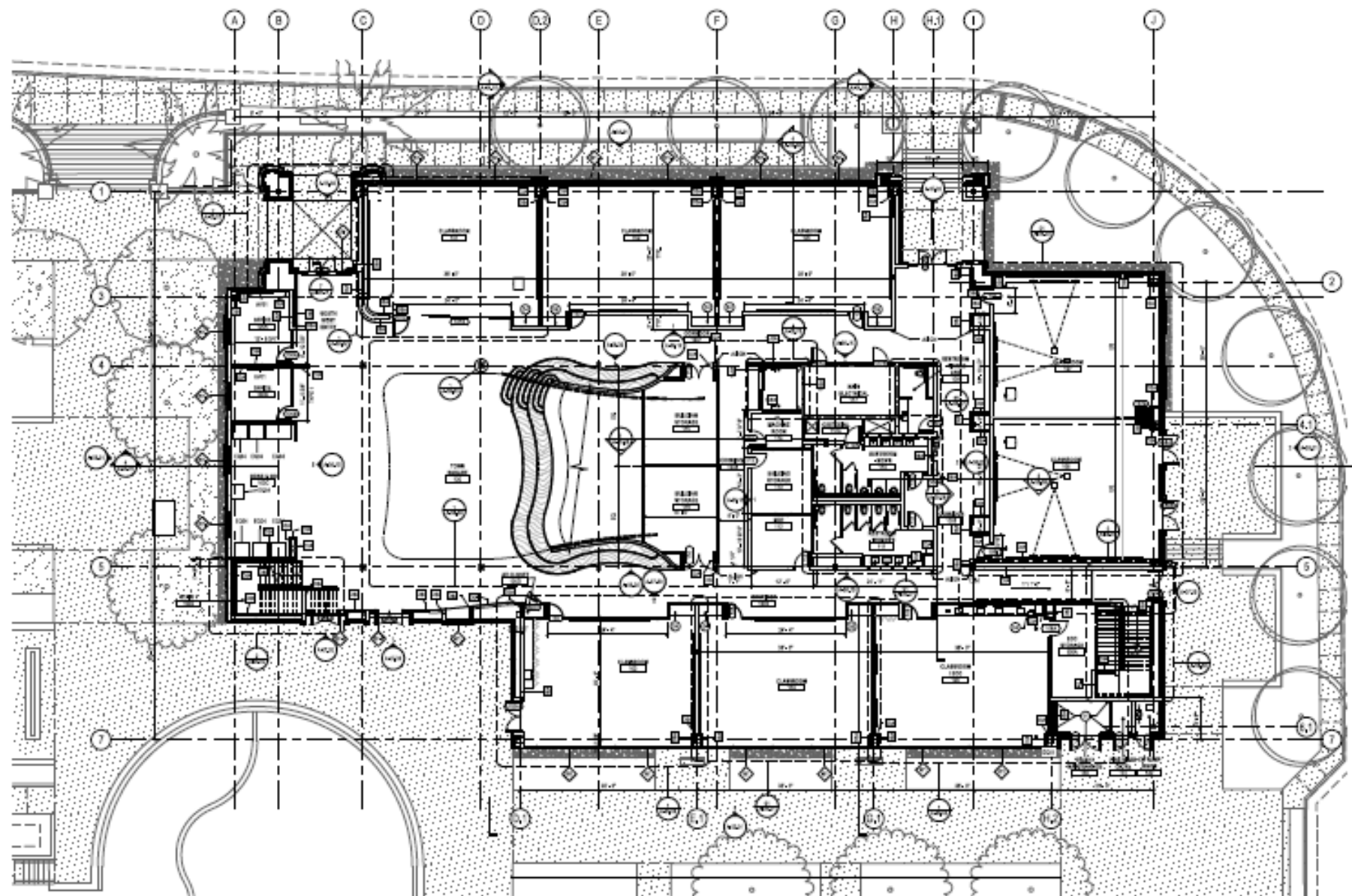
NOT FOR
CONSTRUCTION

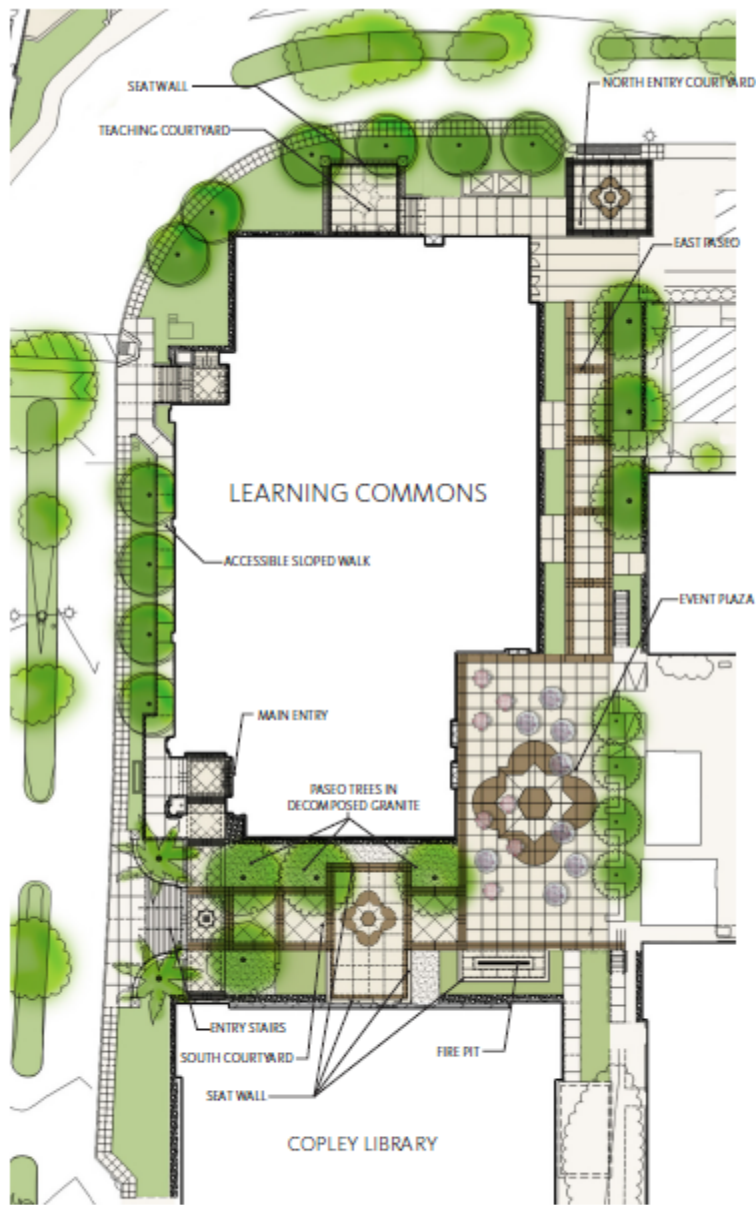
ARCHITECT
Learning Commons

ARCHITECT
SS 7043.001

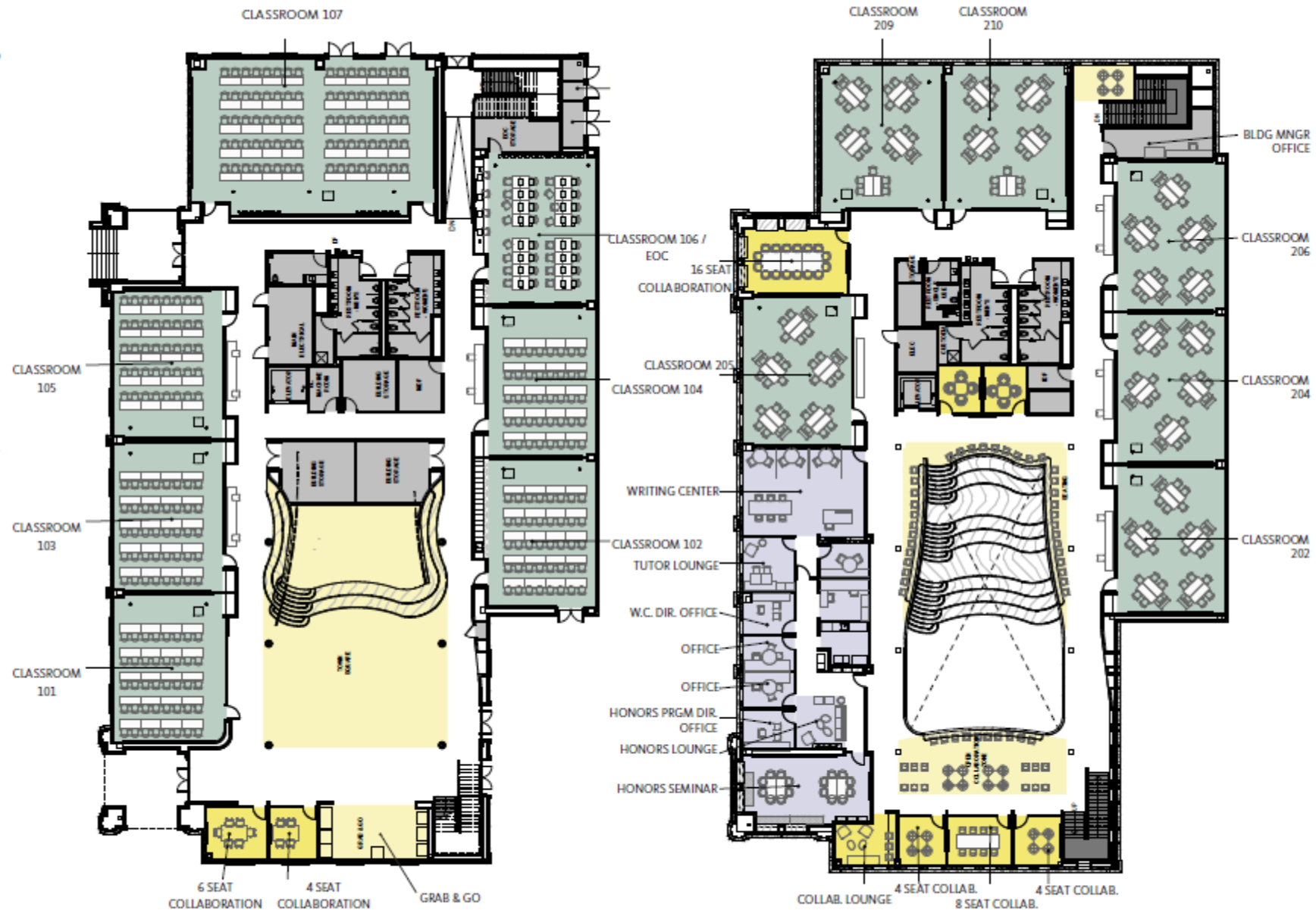
ARCHITECT
3D View 2
REFERENCE ONLY

A-01.51





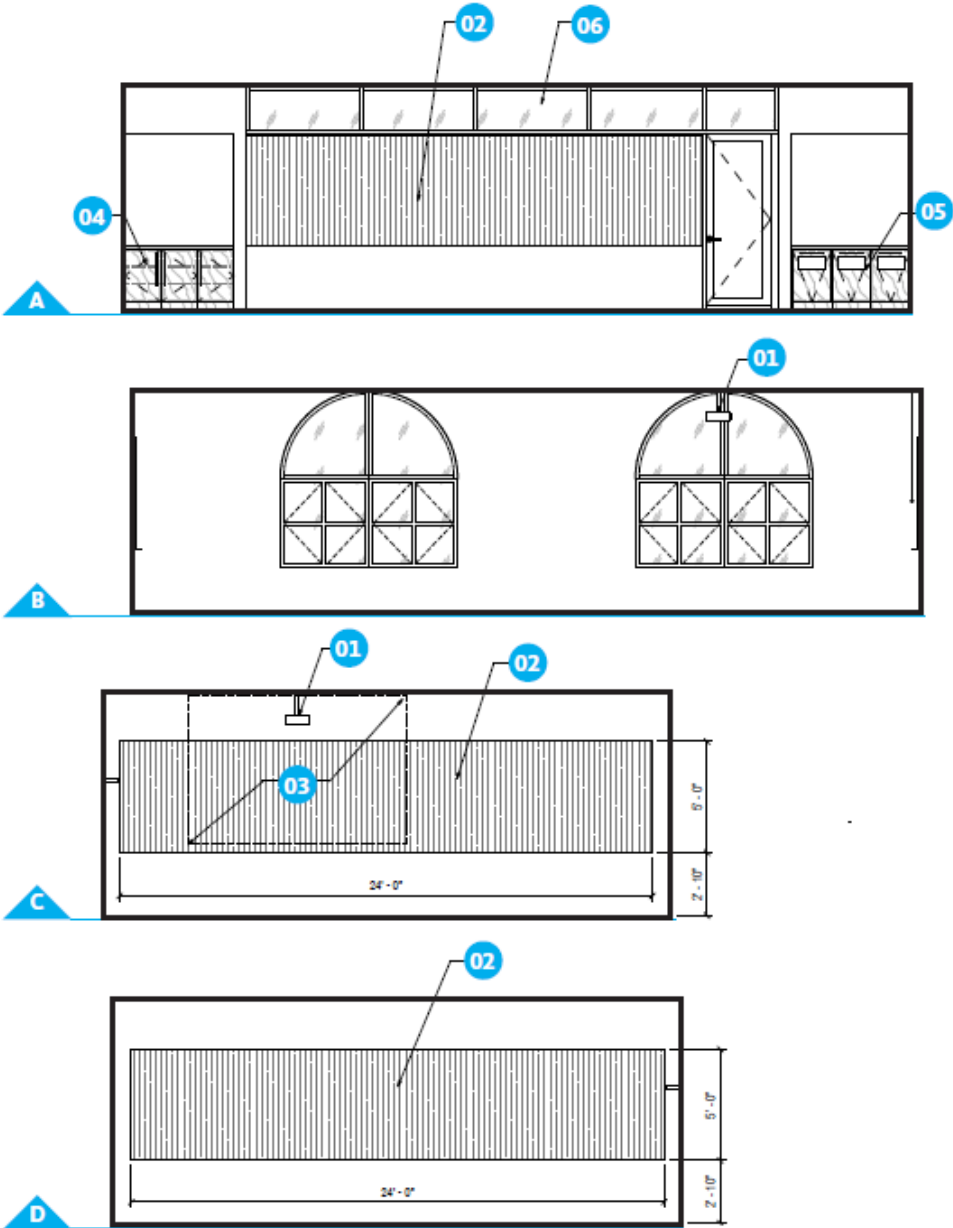
10' 50' 25' SITE PLAN



LEVEL 01

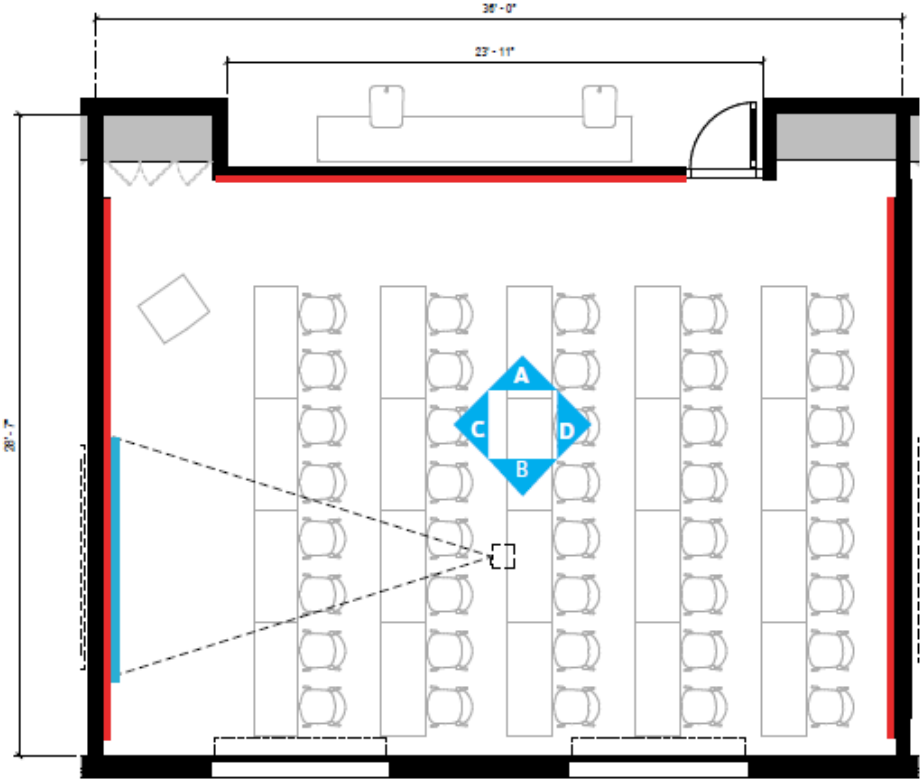
10' 50' 25' LEVEL 02

40 Seat LCR

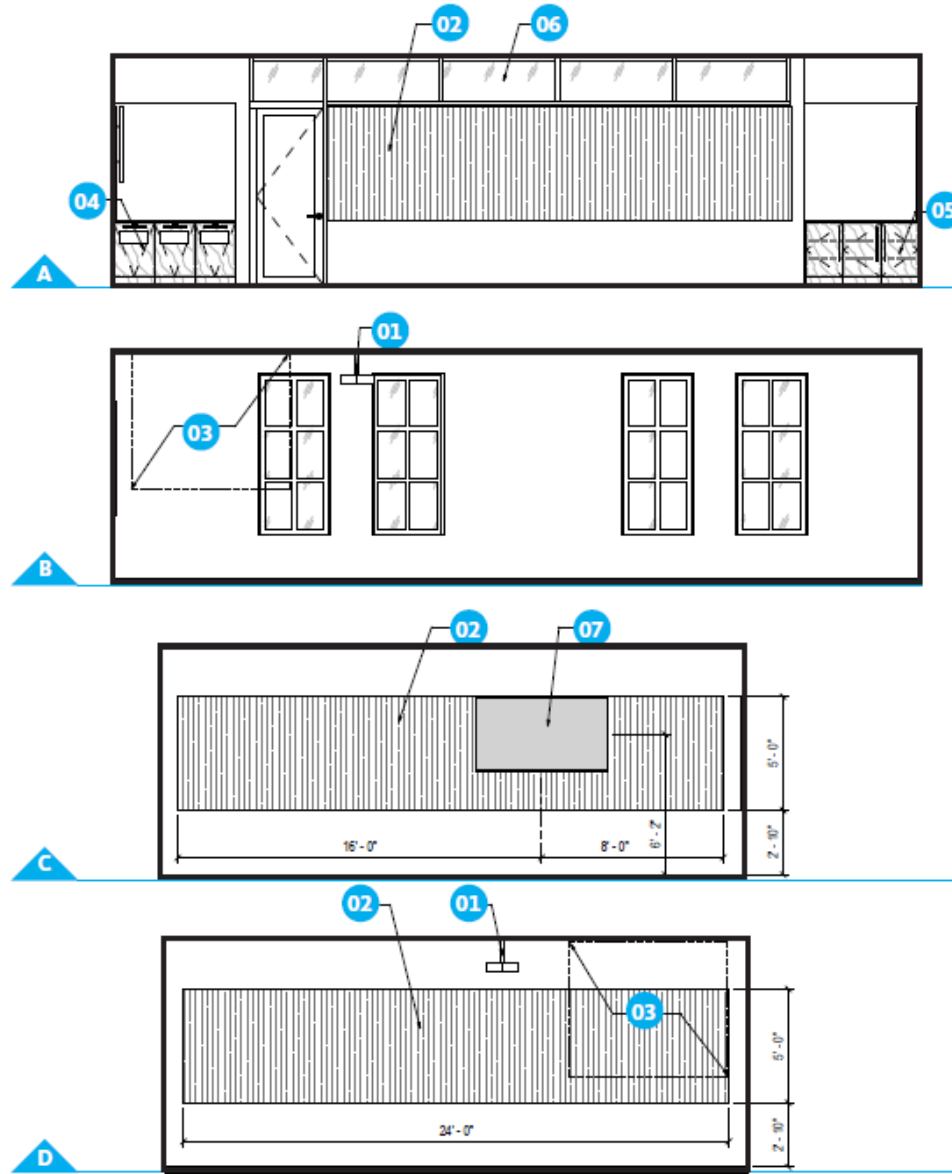


- 01 Ceiling Mounted Projector
- 02 Writable Surface
- 03 Drop Down Projector Screen
- 04 A/V Storage Mill-work
- 05 Trash/Recycling Mill-work
- 06 Aluminum Framed Transom Glazing

- Projector Screen
- Writable Surface
- Video Monitor

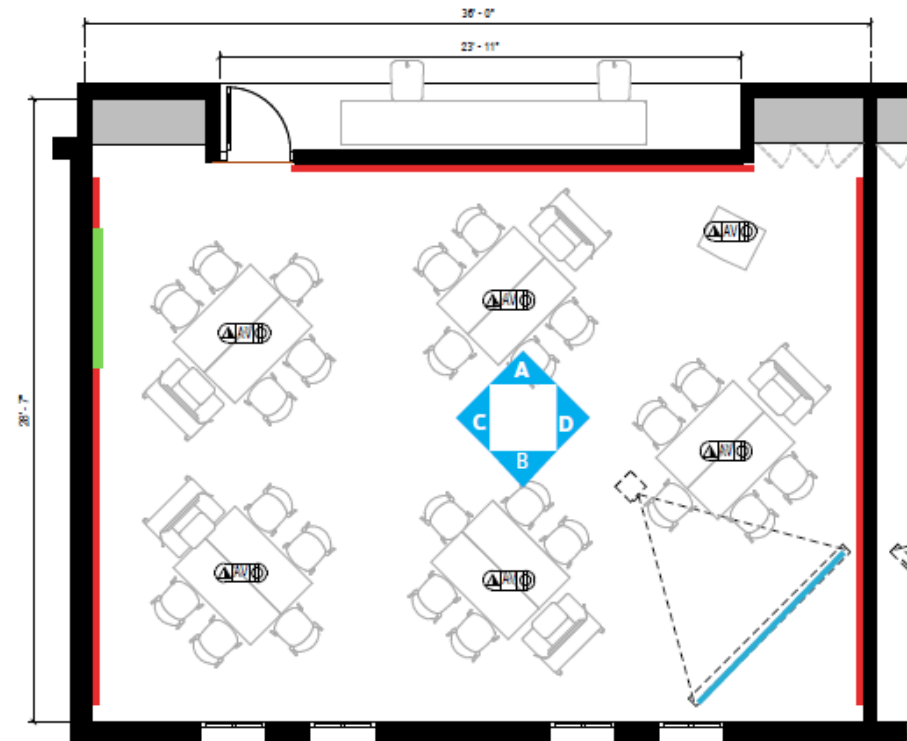


25 Seat ACR



- 01 Ceiling Mounted Projector
- 02 Writable Surface
- 03 Drop Down Projector Screen
- 04 A/V Storage Mill-work
- 05 Trash/Recycling Mill-work
- 06 Aluminum Framed Transom Glazing
- 07 Video Monitor

- Projector Screen
- Writable Surface
- Video Monitor



Classroom Technology Levels 2018

Level 1 - Basic

- Dry Erase or Chalkboard
- Network Infrastructure
- Projection Screen (one)
- Data Projector (one)
- Laptop Display Connection

* could be a display LCD (small rooms)

Level 2 - Basic+

- Dry Erase or Chalkboard
- Network Infrastructure
- Projection Screen (one)
- Data Projector (one)
- Laptop Display Connection
- In Wall Equipment Rack
- Dedicated Room Computer (in classrooms)
- Blu Ray Disc Player
- AV Control Panel (basic control)
- Sound Playback
- System speakers

Level 3 - Standard

- Dry Erase or Chalkboard
- Network Infrastructure
- Projection Screen (one)
- Data Projector (one)
- Laptop Display Connection
- Technology Lectern/Podium
- Dedicated Room Computer
- Blu Ray Disc Player
- AV Control Touch Panel
- Sound Playback
- System speakers
- Document Camera
- Interactive Display
- Apple TV
- Technology Help Button
- 4 Port USB hub

Level 4 - Advanced

- Dry Erase or Chalkboard
- Network Infrastructure
- Projection Screen (one or 2)
- Data Projector (one or 2)
- Laptop Display Connection
- Technology Lectern/Podium
- Dedicated Room Computer
- Blue Ray Disc Player
- AV Control Touch Panel
- System speakers
- Document Camera
- Interactive Display
- Apple TV
- Technology Help Button
- 4 Port USB hub

Special Features:

Large Interactive Display

Lecture Capture

Web or Video Conferencing



Level 3 Podium



Epson Digital Projector

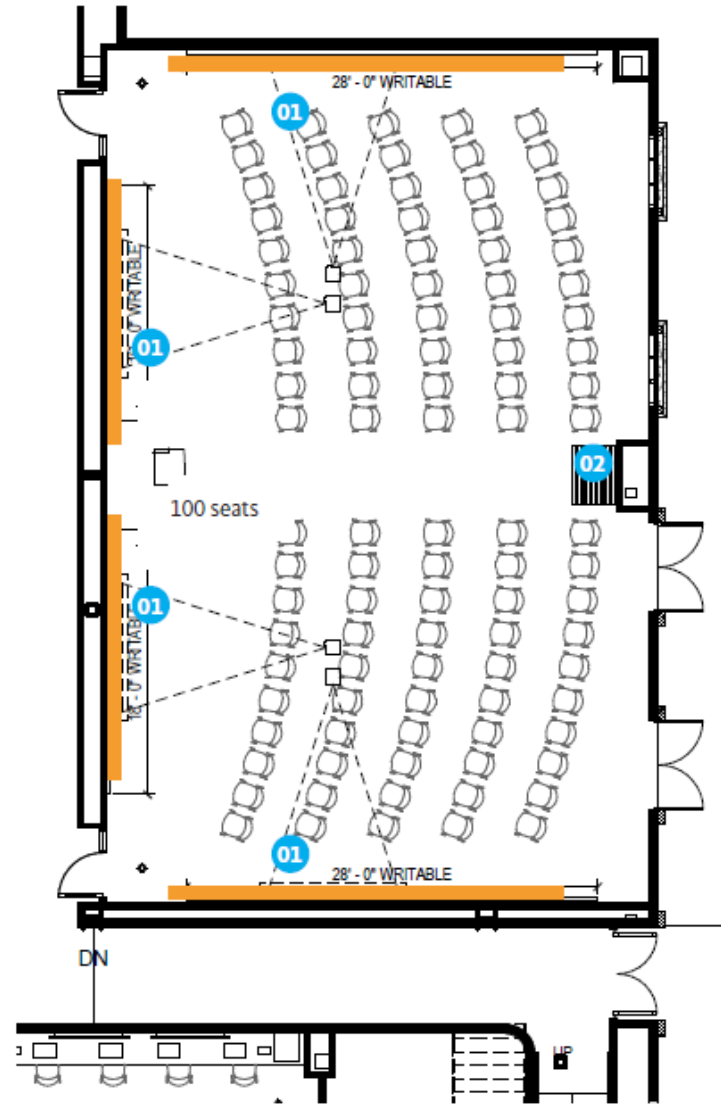
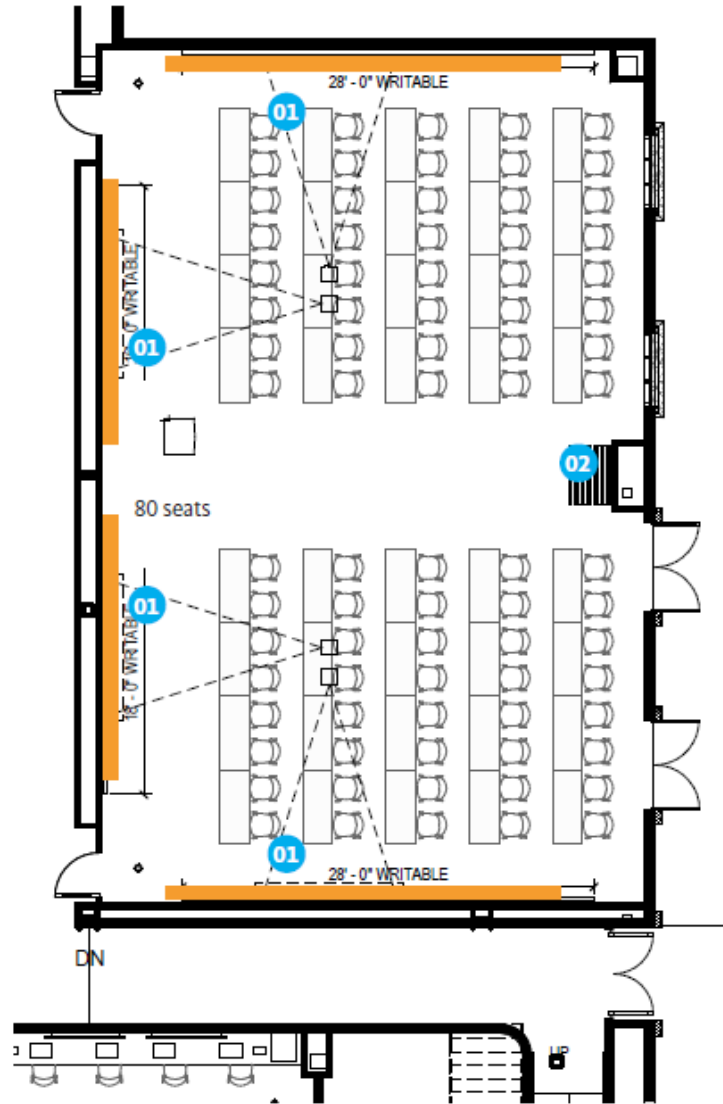


Standard Control Panel

Classroom Technology Search <http://www.sandiego.edu/classroom-technology-search>

North Classroom - Level 01

Combined Rooms



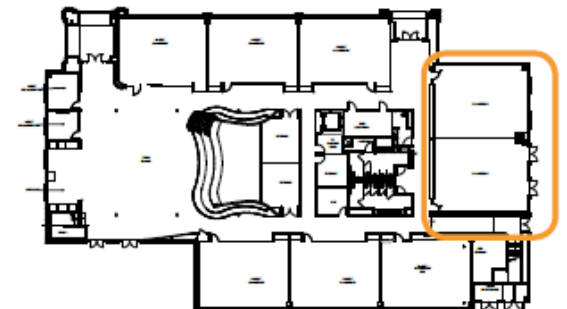
01 Projection Screen

Writable Surface

02 Retractable Wall

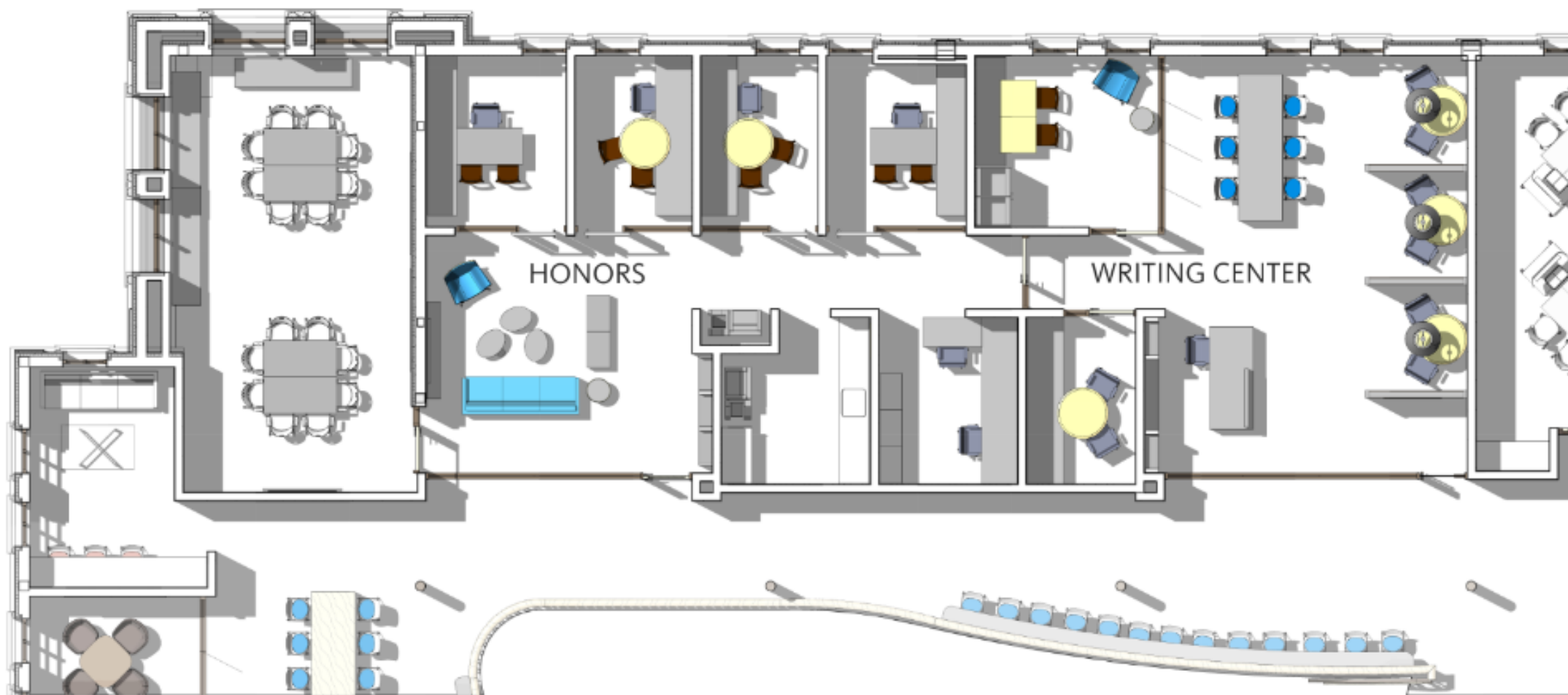


multi-height furniture











Courtyard Options

Open Plaza & Crescent Courtyard, Side by Side



Open Plaza



Crescent - Grass



Crescent - DG

Courtyard Options

Open Plaza - Plan View



